

10 發展項目的住宅物業的樓面平面圖 FLOOR PLANS OF RESIDENTIAL PROPERTIES IN THE DEVELOPMENT

在本頁上之備註和圖例適用於全部的「發展項目的住宅物業的樓面平面圖」頁數。

THE REMARKS AND LEGENDS ON THIS PAGE APPLY TO ALL PAGES OF "FLOOR PLANS OF RESIDENTIAL PROPERTIES IN THE DEVELOPMENT".

樓面平面圖圖例

LEGENDS OF THE FLOOR PLANS

A/C PLATFORM = Air-conditioner Platform 冷氣機平台

A/C UNIT = Air-conditioning Unit 冷氣機

BAL. = Balcony 露台

B.R. = Bedroom 睡房

BATH = Bathroom 浴室

DN = Down 落

DOG HOUSE = Mechanical & Electrical Services Duct 管道檢修井

ELECT. ROOM = Electricity Room 電房

ELV. DUCT = Extra Low Voltage Duct 特低壓電線槽

E&M Plant Room = Electrical and Mechanical Room 機電房

F.H. = Fire Hydrant 消防柱

H/L = High Level 高位

H.R. = Hose Reel 消防喉轆

LAV. = Lavatory 洗手間

LIV./DIN. = Living Room / Dining Room 客廳/飯廳

M.BATH = Master Bathroom 主人浴室

M.B.R. = Master Bedroom 主人睡房

OPEN KIT. = Open Kitchen 開放式廚房

P.D. = Pipe Duct 管道

REFUSE ROOM = Refuse Storage and Material Recovery Room 垃圾及物料回收室

STORE = Store Room 儲物室

TOP OF BAL. = Top of Balcony 下層露台之頂蓋

TOP OF U.P. = Top of Utility Platform 下層工作平台之頂蓋

U.P. = Utility Platform 工作平台

W.M.C. = Water Meter Cabinet 水錶櫃

 = Built-in fittings provided in the flats 隨樓附送嵌入式裝置

備註：

1. 部分住宅物業的露台、工作平台、平台、天台或外牆或設有外露之公用喉管，或外牆裝飾板內藏之公用喉管。
2. 部分住宅物業內之部分天花或有跌級樓板，用以安裝上層之機電設備或配合上層之結構、建築設計及/或裝修設計上的需要。
3. 部分住宅物業內或設有假陣或假天花用以安裝冷氣喉管及/或其他機電設備。
4. 平面圖所列之數字為以毫米標示之建築結構尺寸。
5. 各住宅物業的樓面平面圖內所展示之裝置及設備的圖標如浴缸、洗手盆、座廁、淋浴間、洗滌盆、櫃(如有)等乃根據最新經批准的建築圖則擬備，其形狀、尺寸、比例或與實際提供的裝置及設備存在差異，僅供示意及參考之用。

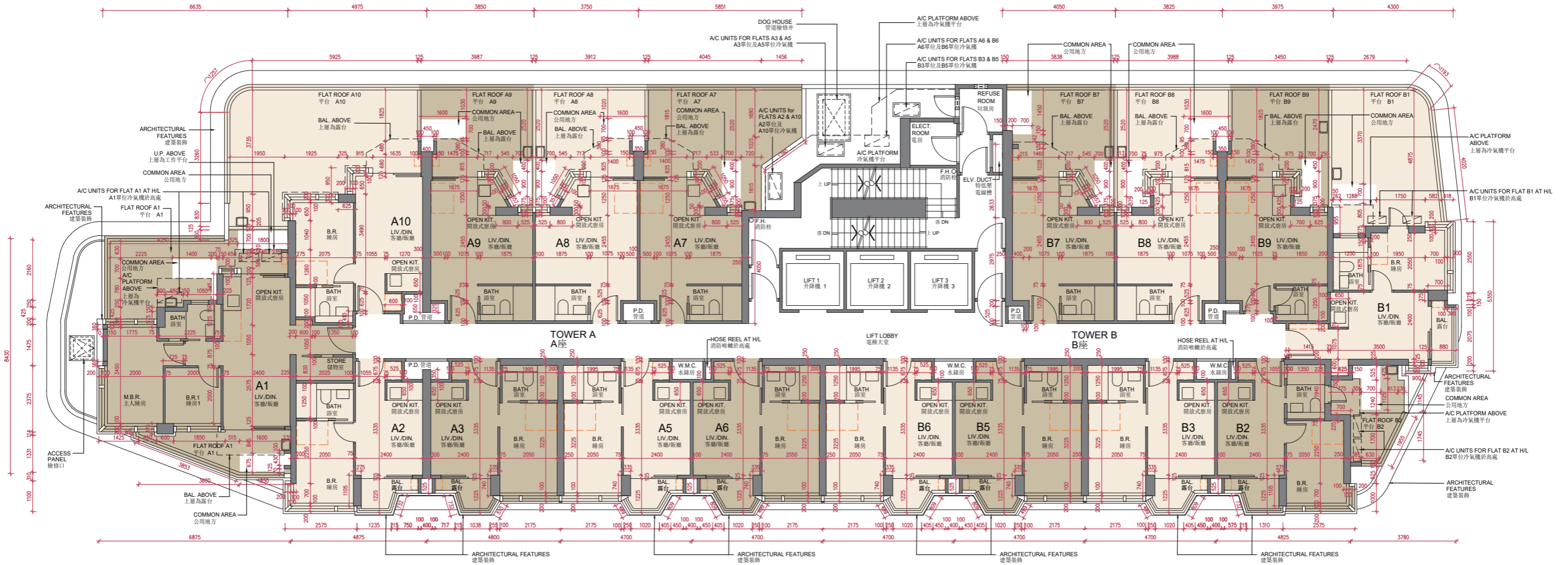
Remarks:

1. Common pipes exposed or enclosed in cladding may be located at the balcony, utility platform, flat roof, roof or external wall of some residential properties.
2. There may be sunken slabs at some parts of the ceiling inside some residential properties for the installation of mechanical and electrical services of the floor above or due to the structural, architectural and/or decoration design requirements of the floor above.
3. There may be ceiling bulkheads or false ceiling inside some residential properties for the installation of air-conditioning conduits and/or other mechanical and electrical services.
4. The dimensions of the floor plans are all structural dimensions in millimeter.
5. Those icons of fittings and fitments shown on the floor plans of residential properties like bathtubs, wash basins, water closets, shower cubicles, sink units, cabinets (if any) etc. are prepared in accordance with the latest approved building plans. Their shapes, dimensions, scales may be differed from the fittings and fitments actually provided and they are for indication and reference only.

10 發展項目的住宅物業的樓面平面圖 FLOOR PLANS OF RESIDENTIAL PROPERTIES IN THE DEVELOPMENT

3樓平面圖

3/F FLOOR PLAN



- 備註 :
1. 平面圖所列的數字為以毫米標示之建築結構尺寸。
 2. 平台空白位置為供維修大廈設備使用的公用地方。
- Notes:
1. The dimensions in floor plans are all structural dimensions in millimeter.
 2. Blank areas on the flat roof are common areas for building facility maintenance.

10 發展項目的住宅物業的樓面平面圖

FLOOR PLANS OF RESIDENTIAL PROPERTIES IN THE DEVELOPMENT

每個住宅物業 Each Residential Property	樓層 Floor	單位 Flat									
		A1	A2	A3	A5	A6	A7	A8	A9	A10	
層與層之間的高度 (毫米) Floor-to-Floor Height (mm)	3 樓 3/F	3275, 3425, 3500	3200, 3500	3500	3500	3500	3200, 3275, 3500	3200, 3275, 3500	3200, 3275, 3500	3200, 3275, 3500	
樓板 (不包括灰泥) 的厚度 (毫米) Thickness of Floor Slab (excluding plaster) (mm)		125, 150, 175	150	150	150	150	150	175	175	125	

每個住宅物業 Each Residential Property	樓層 Floor	單位 Flat								
		B1	B2	B3	B5	B6	B7	B8	B9	
層與層之間的高度 (毫米) Floor-to-Floor Height (mm)	3 樓 3/F	3050, 3125, 3500	3425, 3500	3200, 3500	3500	3200, 3500	3200, 3275, 3500	3200, 3275, 3500	3200, 3275, 3500	
樓板 (不包括灰泥) 的厚度 (毫米) Thickness of Floor Slab (excluding plaster) (mm)		150	150	150	150	150	175	175	150	

因住宅物業的較高樓層的結構牆的厚度遞減，較高樓層的內部面積，一般比較低樓層的內部面積稍大。

The internal areas of the residential properties on the upper floors will generally be slightly larger than those on the lower floors because of the reducing thickness of the structural walls on the upper floors.

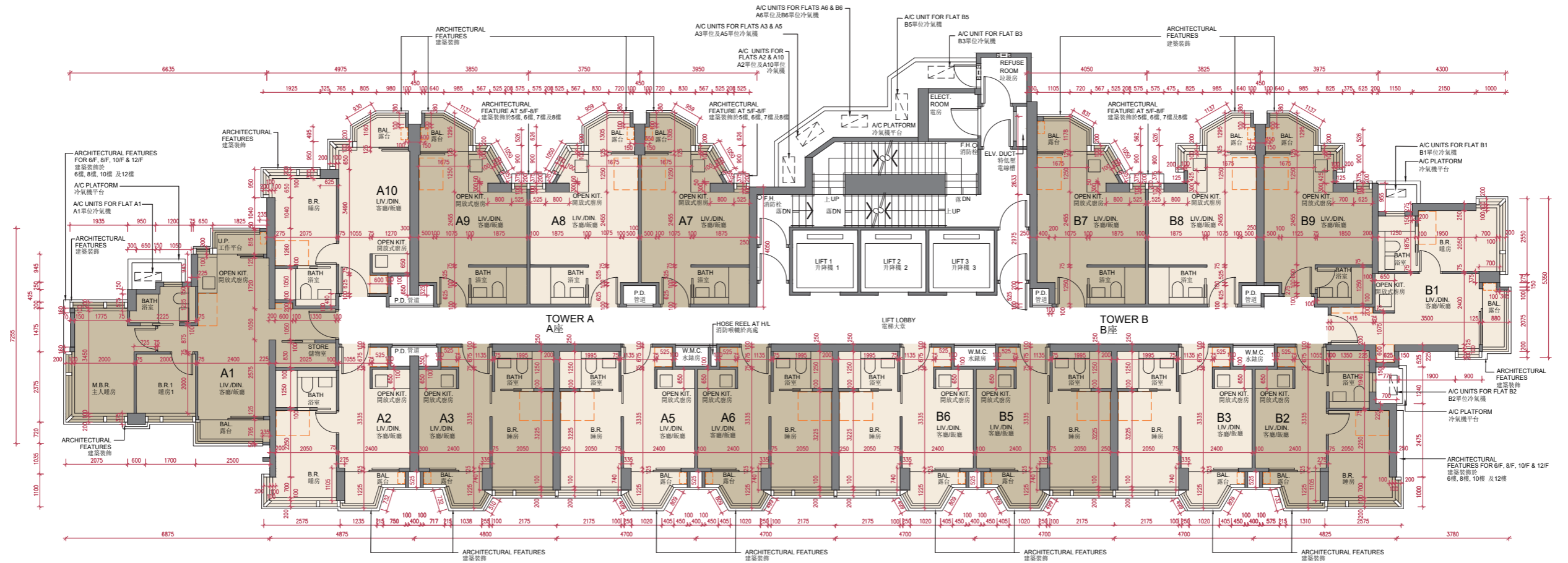
請參閱本售樓說明書第22頁為住宅物業樓面平面圖而設之備註及名詞及簡稱的圖例。

Please refer to page 22 of this sales brochure for the remarks and legends of the terms and abbreviations for the floor plans of residential properties.

10 發展項目的住宅物業的樓面平面圖 FLOOR PLANS OF RESIDENTIAL PROPERTIES IN THE DEVELOPMENT

5樓-12樓、15樓平面圖

5/F - 12/F, 15/F FLOOR PLAN



比例尺 SCALE 0M (米) 5M (米)

備註：平面圖所列的數字為以毫米標示之建築結構尺寸。
Note: The dimensions in floor plans are all structural dimensions in millimeter.

10 發展項目的住宅物業的樓面平面圖

FLOOR PLANS OF RESIDENTIAL PROPERTIES IN THE DEVELOPMENT

每個住宅物業 Each Residential Property	樓層 Floor	單位 Flat								
		A1	A2	A3	A5	A6	A7	A8	A9	A10
層與層之間的高度 (毫米) Floor-to-Floor Height (mm)	5樓 -12樓 5/F-12/F	3500	3500	3500	3500	3500	3500	3500	3500	3500
樓板 (不包括灰泥) 的厚度 (毫米) Thickness of Floor Slab (excluding plaster) (mm)		125, 150, 175	150	150	150	150	150	175	175	125

每個住宅物業 Each Residential Property	樓層 Floor	單位 Flat							
		B1	B2	B3	B5	B6	B7	B8	B9
層與層之間的高度 (毫米) Floor-to-Floor Height (mm)	5樓 -12樓 5/F-12/F	3500	3500	3500	3500	3500	3500	3500	3500
樓板 (不包括灰泥) 的厚度 (毫米) Thickness of Floor Slab (excluding plaster) (mm)		150	150	150	150	150	175	175	150

每個住宅物業 Each Residential Property	樓層 Floor	單位 Flat								
		A1	A2	A3	A5	A6	A7	A8	A9	A10
層與層之間的高度 (毫米) Floor-to-Floor Height (mm)	15樓 15/F	3500	3500	3500	3500	3500	3500	3500	3500	3500
樓板 (不包括灰泥) 的厚度 (毫米) Thickness of Floor Slab (excluding plaster) (mm)		125, 150	150	150	150	150	150	175	175	125

每個住宅物業 Each Residential Property	樓層 Floor	單位 Flat							
		B1	B2	B3	B5	B6	B7	B8	B9
層與層之間的高度 (毫米) Floor-to-Floor Height (mm)	15樓 15/F	3500	3500	3500	3500	3500	3500	3500	3500
樓板 (不包括灰泥) 的厚度 (毫米) Thickness of Floor Slab (excluding plaster) (mm)		150	150	150	150	150	175, 325	175	150

因住宅物業的較高樓層的結構牆的厚度遞減，較高樓層的內部面積，一般比較低樓層的內部面積稍大。

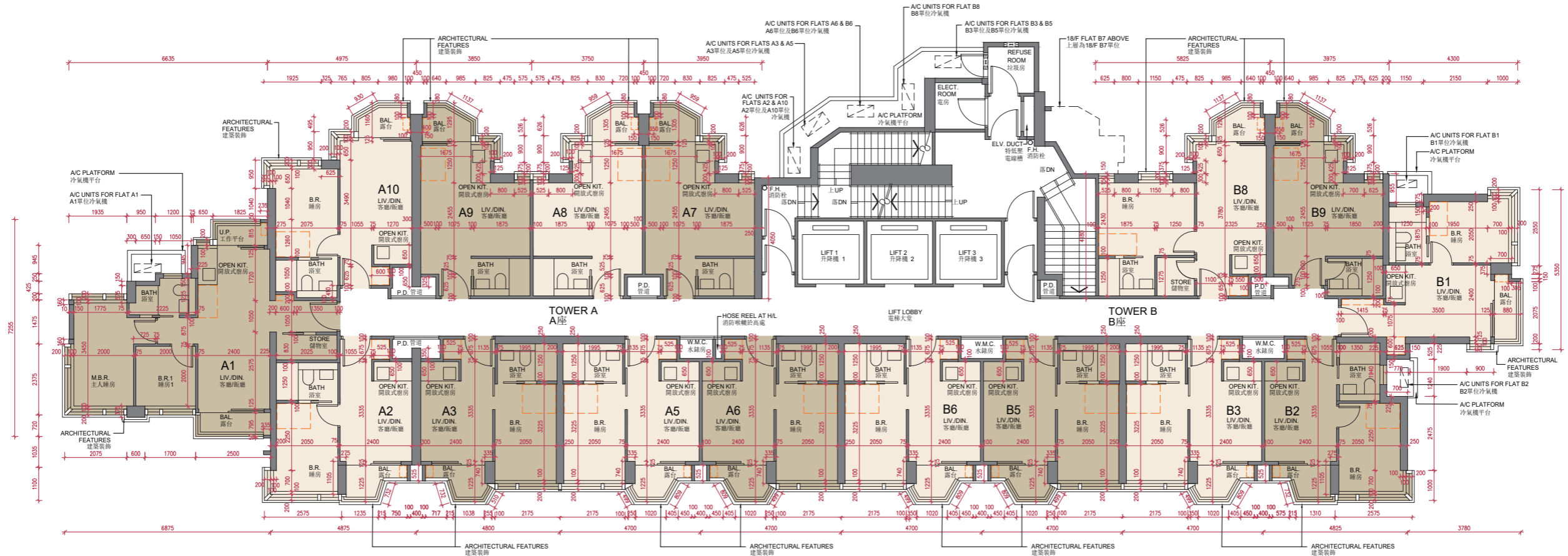
The internal areas of the residential properties on the upper floors will generally be slightly larger than those on the lower floors because of the reducing thickness of the structural walls on the upper floors.

請參閱本售樓說明書第22頁為住宅物業樓面平面圖而設之備註及名詞及簡稱的圖例。

Please refer to page 22 of this sales brochure for the remarks and legends of the terms and abbreviations for the floor plans of residential properties.

10 發展項目的住宅物業的樓面平面圖 FLOOR PLANS OF RESIDENTIAL PROPERTIES IN THE DEVELOPMENT

17樓平面圖
17/F FLOOR PLAN



比例尺 SCALE 0M (米) 5M (米)

備註：平面圖所列的數字為以毫米標示之建築結構尺寸。
Note: The dimensions in floor plans are all structural dimensions in millimeter.

10 發展項目的住宅物業的樓面平面圖

FLOOR PLANS OF RESIDENTIAL PROPERTIES IN THE DEVELOPMENT

每個住宅物業 Each Residential Property	樓層 Floor	單位 Flat								
		A1	A2	A3	A5	A6	A7	A8	A9	A10
層與層之間的高度 (毫米) Floor-to-Floor Height (mm)	17 樓 17/F	3500	3500	3500	3500	3500	3500	3500	3500	3500
樓板 (不包括灰泥) 的厚度 (毫米) Thickness of Floor Slab (excluding plaster) (mm)		125, 150, 175	150	150	150	150	150	175	175	125

每個住宅物業 Each Residential Property	樓層 Floor	單位 Flat						
		B1	B2	B3	B5	B6	B8	B9
層與層之間的高度 (毫米) Floor-to-Floor Height (mm)	17 樓 17/F	3500	3500	3500	3500	3500	3200, 3425, 3500	3500
樓板 (不包括灰泥) 的厚度 (毫米) Thickness of Floor Slab (excluding plaster) (mm)		150	150	150	150	150	175	150

因住宅物業的較高樓層的結構牆的厚度遞減，較高樓層的內部面積，一般比較低樓層的內部面積稍大。

The internal areas of the residential properties on the upper floors will generally be slightly larger than those on the lower floors because of the reducing thickness of the structural walls on the upper floors.

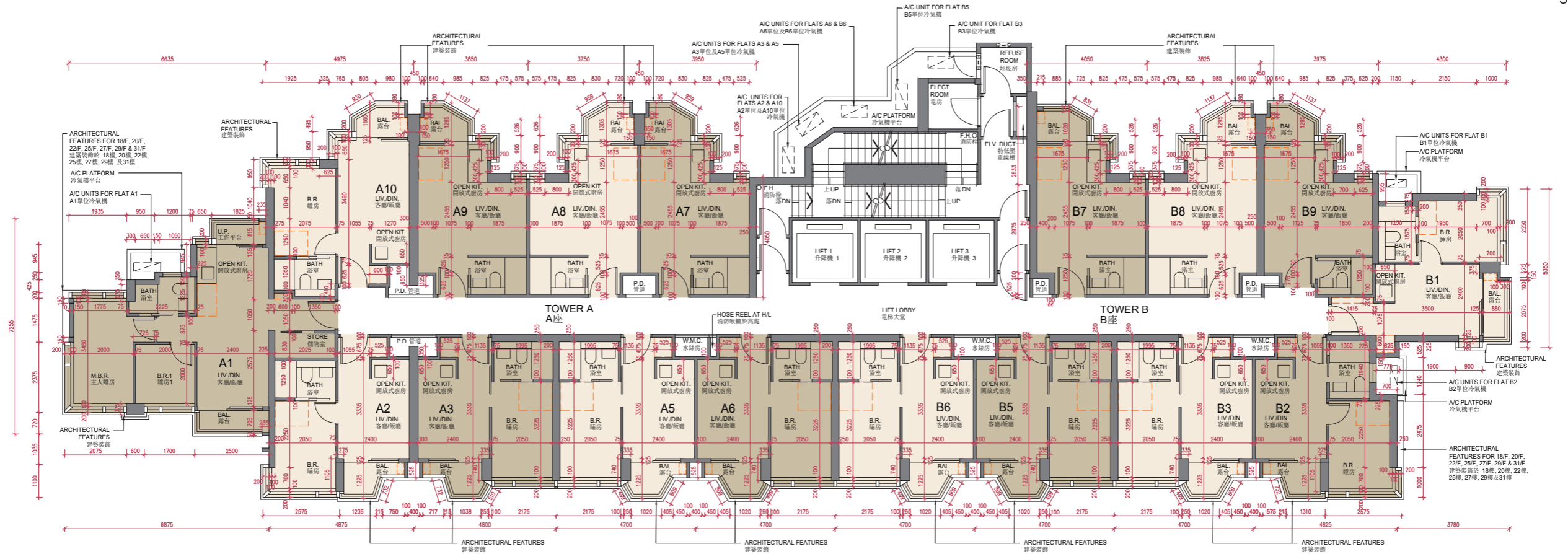
請參閱本售樓說明書第22頁為住宅物業樓面平面圖而設之備註及名詞及簡稱的圖例。

Please refer to page 22 of this sales brochure for the remarks and legends of the terms and abbreviations for the floor plans of residential properties.

10 發展項目的住宅物業的樓面平面圖 FLOOR PLANS OF RESIDENTIAL PROPERTIES IN THE DEVELOPMENT

18樓-23樓、25樓-30樓平面圖

18/F-23/F, 25/F-30/F FLOOR PLAN

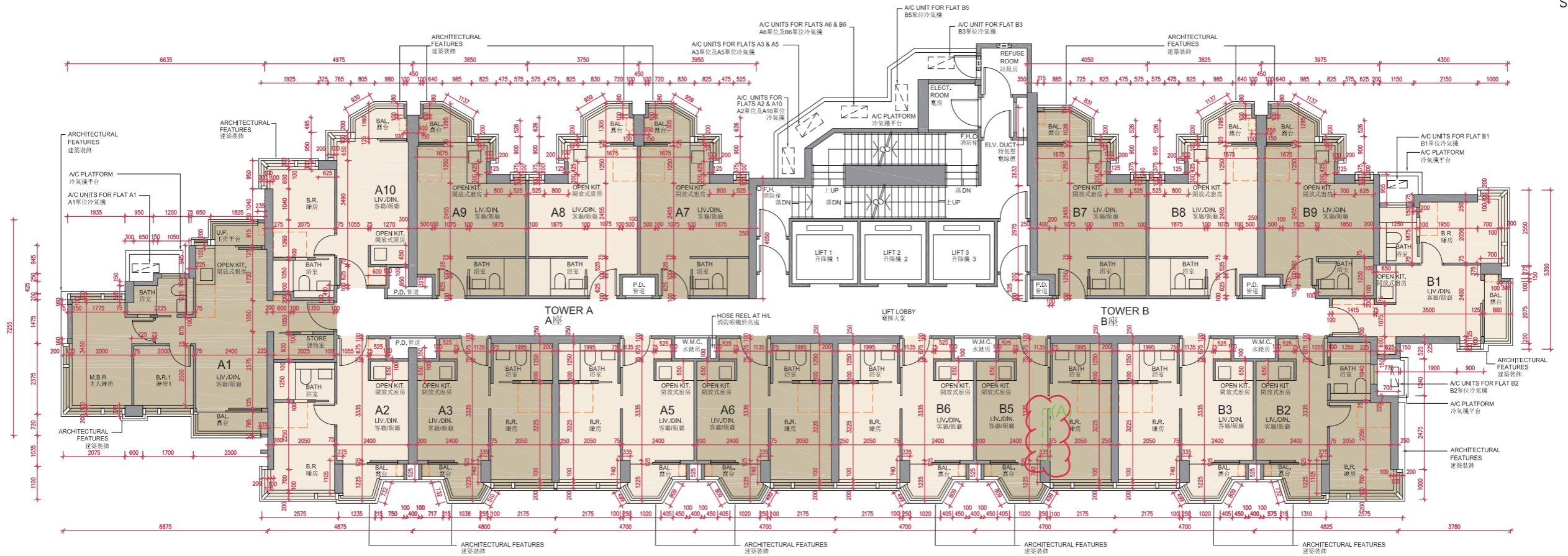


比例尺 SCALE 0M (米) 5M (米)

備註：平面圖所列的數字為以毫米標示之建築結構尺寸。
Note: The dimensions in floor plans are all structural dimensions in millimeter.

10 發展項目的住宅物業的樓面平面圖 FLOOR PLANS OF RESIDENTIAL PROPERTIES IN THE DEVELOPMENT

31樓平面圖 31/F FLOOR PLAN



31樓B5單位在發展項目落成後進行獲《建築物條例》(第123章)豁免的工程而有所改動，該等改動的大概位置已於本樓面平面圖中作標示。

Flat B5 on 31/F has been altered by way of exempted works under the Buildings Ordinance (Cap. 123) after completion of the Development. The approximate locations of alterations are indicated on this floor plan.

31樓B5單位的改動工程包括：

(A) 原睡房的間隔牆被移除並以嵌入式裝置取代。

Alteration works for Flat B5 on 31/F include:

(A) Original partition wall of Bedroom has been removed and replaced with built-in fittings.

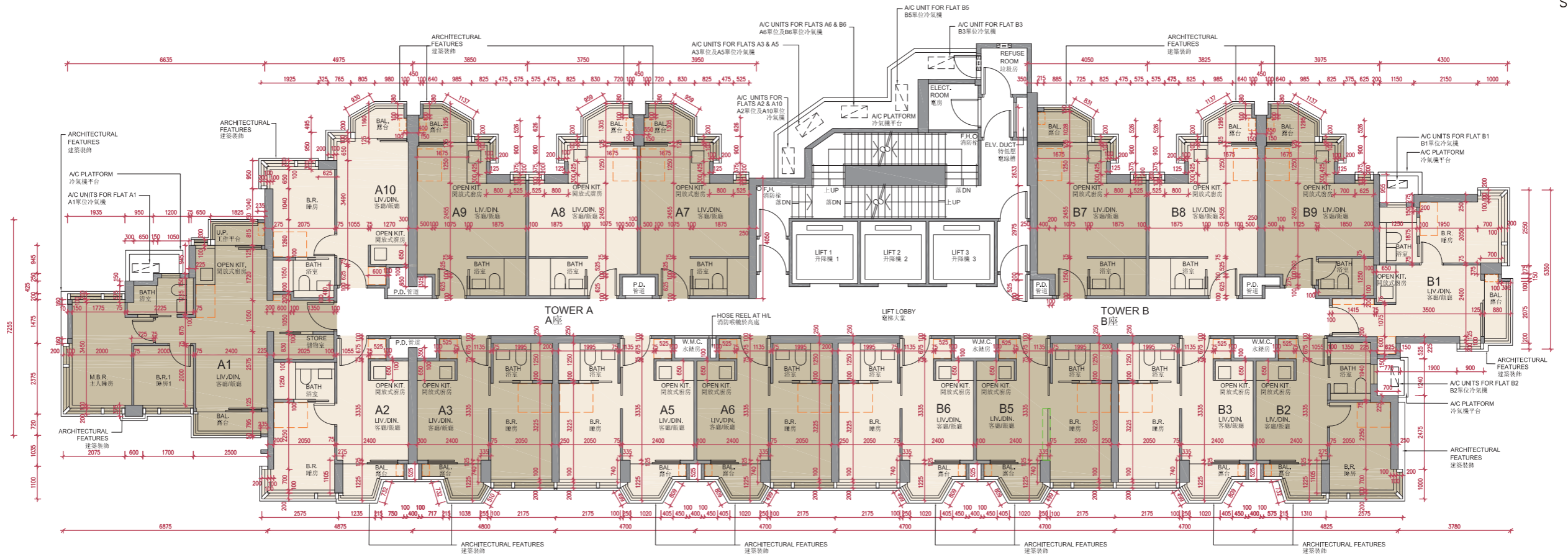
比例尺 SCALE 0M (米) 5M (米)

備註：平面圖所列的數字為以毫米標示之建築結構尺寸。

Note: The dimensions in floor plans are all structural dimensions in millimeter.

10 發展項目的住宅物業的樓面平面圖 FLOOR PLANS OF RESIDENTIAL PROPERTIES IN THE DEVELOPMENT

31樓現狀間隔平面圖
31/F AS IS FLOOR PLAN



比例尺 SCALE 0M (米) 5M (米)

備註：平面圖所列的數字為以毫米標示之建築結構尺寸。
Note: The dimensions in floor plans are all structural dimensions in millimeter.

10 發展項目的住宅物業的樓面平面圖

FLOOR PLANS OF RESIDENTIAL PROPERTIES IN THE DEVELOPMENT

每個住宅物業 Each Residential Property	樓層 Floor	單位 Flat									
		A1	A2	A3	A5	A6	A7	A8	A9	A10	
層與層之間的高度 (毫米) Floor-to-Floor Height (mm)	18樓-23樓、 25樓-30樓 18/F-23/F, 25/F-30/F	3500	3500	3500	3500	3500	3500	3500	3500	3500	3500
樓板 (不包括灰泥) 的厚度 (毫米) Thickness of Floor Slab (excluding plaster) (mm)		125, 150, 175	150	150	150	150	150	175	175	125	

每個住宅物業 Each Residential Property	樓層 Floor	單位 Flat								
		B1	B2	B3	B5	B6	B7	B8	B9	
層與層之間的高度 (毫米) Floor-to-Floor Height (mm)	18樓-23樓、 25樓-30樓 18/F-23/F, 25/F-30/F	3500	3500	3500	3500	3500	3500	3500	3500	3500
樓板 (不包括灰泥) 的厚度 (毫米) Thickness of Floor Slab (excluding plaster) (mm)		150	150	150	150	150	175	175	150	

每個住宅物業 Each Residential Property	樓層 Floor	單位 Flat									
		A1	A2	A3	A5	A6	A7	A8	A9	A10	
層與層之間的高度 (毫米) Floor-to-Floor Height (mm)	31樓 31/F	3500	3500	3200, 3275, 3425, 3500	3200, 3275, 3425, 3500	3275, 3500	3500	3500	3500	3500	
樓板 (不包括灰泥) 的厚度 (毫米) Thickness of Floor Slab (excluding plaster) (mm)		125, 150, 175	150	150	150	150	150	175	175	125	

每個住宅物業 Each Residential Property	樓層 Floor	單位 Flat								
		B1	B2	B3	B5	B6	B7	B8	B9	
層與層之間的高度 (毫米) Floor-to-Floor Height (mm)	31樓 31/F	3500	3500	3200, 3275, 3425, 3500	3200, 3275, 3425, 3500	3275, 3500	3500	3500	3500	
樓板 (不包括灰泥) 的厚度 (毫米) Thickness of Floor Slab (excluding plaster) (mm)		150	150	150	150	150	175	175	150	

因住宅物業的較高樓層的結構牆的厚度遞減，較高樓層的內部面積，一般比較低樓層的內部面積稍大。

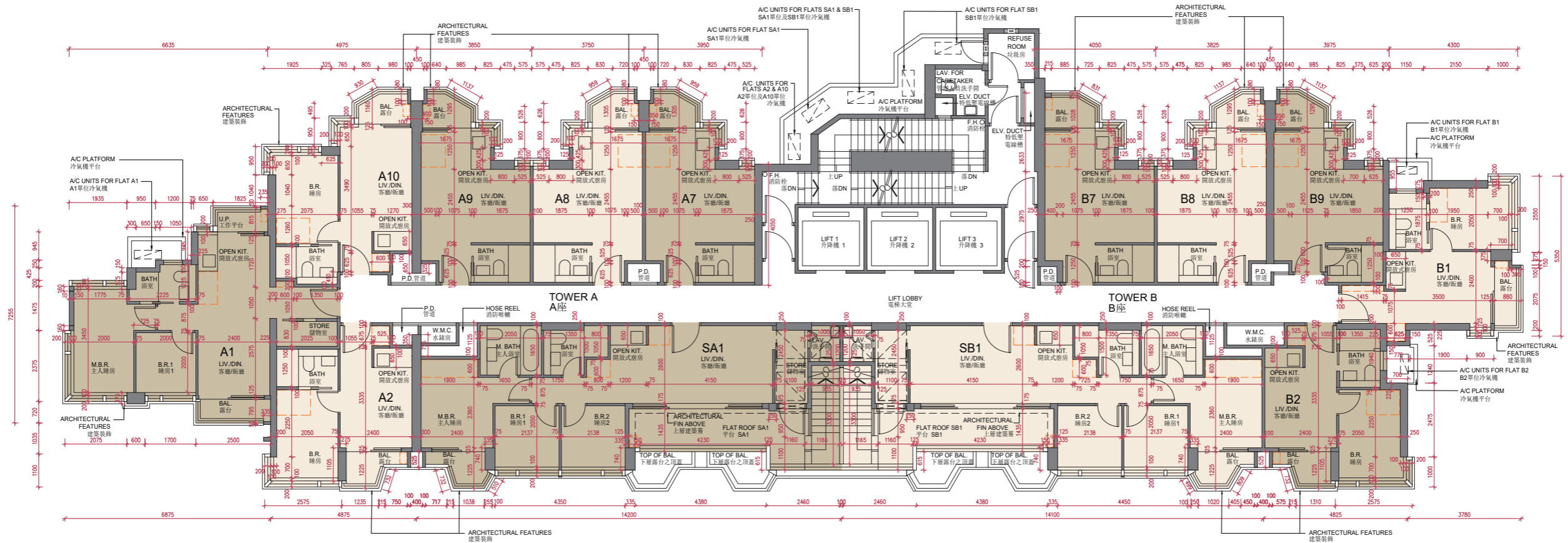
The internal areas of the residential properties on the upper floors will generally be slightly larger than those on the lower floors because of the reducing thickness of the structural walls on the upper floors.

請參閱本售樓說明書第22頁為住宅物業樓面平面圖而設之備註及名詞及簡稱的圖例。

Please refer to page 22 of this sales brochure for the remarks and legends of the terms and abbreviations for the floor plans of residential properties.

10 發展項目的住宅物業的樓面平面圖 FLOOR PLANS OF RESIDENTIAL PROPERTIES IN THE DEVELOPMENT

32樓平面圖
32/F FLOOR PLAN



比例尺 SCALE 0M (米) 5M (米)

備註：平面圖所列的數字為以毫米標示之建築結構尺寸。
Note: The dimensions in floor plans are all structural dimensions in millimeter.

10 發展項目的住宅物業的樓面平面圖

FLOOR PLANS OF RESIDENTIAL PROPERTIES IN THE DEVELOPMENT

每個住宅物業 Each Residential Property	樓層 Floor	單位 Flat						
		A1	A2	SA1	A7	A8	A9	A10
層與層之間的高度 (毫米) Floor-to-Floor Height (mm)	32 樓 32/F	3825	3825	3825	3825	3825	3825	3825
樓板 (不包括灰泥) 的厚度 (毫米) Thickness of Floor Slab (excluding plaster) (mm)		200	200	200	200	200	200	200

每個住宅物業 Each Residential Property	樓層 Floor	單位 Flat					
		B1	B2	SB1	B7	B8	B9
層與層之間的高度 (毫米) Floor-to-Floor Height (mm)	32 樓 32/F	3825	3825	3825	3825	3825	3825
樓板 (不包括灰泥) 的厚度 (毫米) Thickness of Floor Slab (excluding plaster) (mm)		200	200	200	200	200	200

因住宅物業的較高樓層的結構牆的厚度遞減，較高樓層的內部面積，一般比較低樓層的內部面積稍大。

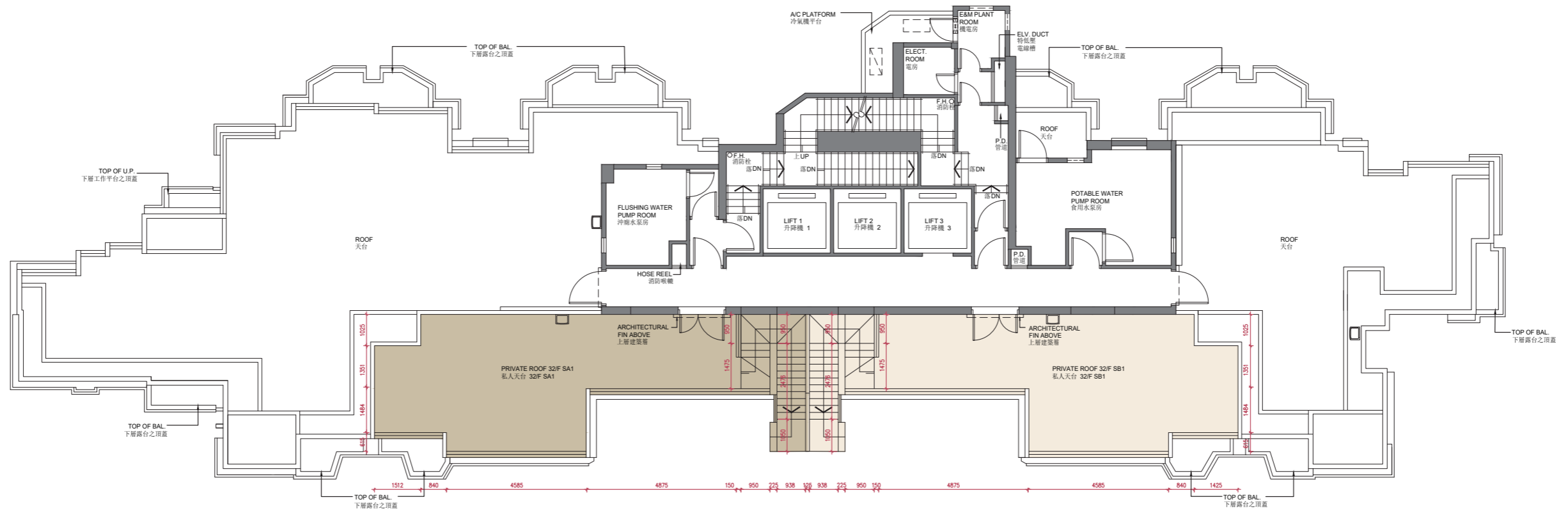
The internal areas of the residential properties on the upper floors will generally be slightly larger than those on the lower floors because of the reducing thickness of the structural walls on the upper floors.

請參閱本售樓說明書第22頁為住宅物業樓面平面圖而設之備註及名詞及簡稱的圖例。

Please refer to page 22 of this sales brochure for the remarks and legends of the terms and abbreviations for the floor plans of residential properties.

10 發展項目的住宅物業的樓面平面圖 FLOOR PLANS OF RESIDENTIAL PROPERTIES IN THE DEVELOPMENT

天台平面圖
ROOF PLAN



備註：平面圖所列的數字為以毫米標示之建築結構尺寸。
Note: The dimensions in floor plans are all structural dimensions in millimeter.

10 發展項目的住宅物業的樓面平面圖

FLOOR PLANS OF RESIDENTIAL PROPERTIES IN THE DEVELOPMENT

每個住宅物業 Each Residential Property	樓層 Floor	單位 Flat	
		SA1	SB1
層與層之間的高度 (毫米) Floor-to-Floor Height (mm)	天台 Roof	不適用 Not applicable	
樓板 (不包括灰泥) 的厚度 (毫米) Thickness of Floor Slab (excluding plaster) (mm)			

因住宅物業的較高樓層的結構牆的厚度遞減，較高樓層的內部面積，一般比較低樓層的內部面積稍大。

The internal areas of the residential properties on the upper floors will generally be slightly larger than those on the lower floors because of the reducing thickness of the structural walls on the upper floors.

請參閱本售樓說明書第22頁為住宅物業樓面平面圖而設之備註及名詞及簡稱的圖例。

Please refer to page 22 of this sales brochure for the remarks and legends of the terms and abbreviations for the floor plans of residential properties.